



# INVENTORY BY WEIGHT OF MEAT ACROSS THREE DISTRIBUTION CENTERS

**Case Study:** Warehouse Support – Asset Management Company

An asset management company needed a solution to **count meat**, **which had to be weighed to give inventory accuracy**, for due diligence after a Brazilian food company was selling assets



[Sales@rgis.com](mailto:Sales@rgis.com)



[www.rgis.com](http://www.rgis.com)

**RGIS**



# INVENTORY BY WEIGHT OF MEAT ACROSS THREE DISTRIBUTION CENTERS

**Case Study:** Warehouse Support – Asset Management Company

A company that provides consulting services and develops software for corporate asset management and appraisal required the support of RGIS. The company was founded in 1952 and comprises of companies operating in United States, Latin America and Europe.



## REQUIREMENT

An asset management company was completing their financial due diligence because a Brazilian food company had sold all their assets in Argentina. The asset management company needed a solution to count inventory at the food company, which comprised of meat, so it had to be weighed to give inventory accuracy.

The asset management company required RGIS to provide the following:

- **National coverage**
- Complete inventory of stock in **three different distribution centers**
- **Cost of goods** to be included in reporting
- As the assets were from a large butcher's shop, **meat needed to be counted**



## SOLUTION

The asset management company partnered with RGIS to complete the **due diligence project**, and RGIS provided the following:

- Scheduled a team of **64 experienced RGIS auditors**
- Teams were split over **three distribution centers**
- **Weighed meat products** and **counted all other inventory items**
- Included **costings of the goods** within the reporting



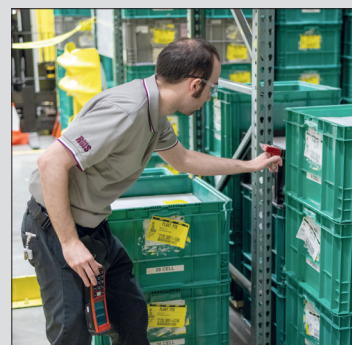
## RESULTS

The asset management company found by outsourcing the **due diligence project** to RGIS, the following results were achieved:

- A list of all the products including the meat items were **completed with the value in local currency and US dollars**
- Reports were presented to the customer to **define the cost of goods** as part of the due diligence project
- The process was **completed on time** and the **customer was very happy with the reporting received**



By partnering with RGIS, the asset management company received the required **reporting to define the cost of goods** as part of the due diligence, which meant that the sale could successfully proceed



© 2021 RGIS. All rights reserved.  
RGIS\_CS\_0243\_01

Warehouse Audit



Inventory Weighed



Stock Valued



Accurate Reports



CONTACT **RGIS** TODAY TO SEE HOW **WE CAN HELP YOU**



[Sales@rgis.com](mailto:Sales@rgis.com)



[www.rgis.com](http://www.rgis.com)

**RGIS**