



# FASHION RETAILER INVENTORIES TO ENABLE RELIABLE ONLINE ORDERING

**Case Study:** Retail Inventory – Fashion Retailer

A fashion retailer needed a solution to **update the inventory management systems with accurate stock on hand information** to reflect the physical stock



# FASHION RETAILER INVENTORIES TO ENABLE RELIABLE ONLINE ORDERING

## Case Study: Retail Inventory – Fashion Retailer

A multifaceted fashion and lifestyle business operating across retail, wholesale, production and logistics required the support of RGIS. The clothing stores are supported by a diverse and united community of customers, staff and brand partners, and works with a cohesive end-to-end business model unique to the market. The fashion retailer owns and operates twelve retail stores, as well as a successful online business servicing customers worldwide.

### REQUIREMENT

The fashion retailer needed a solution to **update the inventory management systems, with accurate stock on hand information** to reflect the physical stock, to enable a reliable online ordering service.

The fashion retailer required RGIS to provide the following:

- All stores to be counted in the same week to provide a **business-wide accurate stock position**
- Inventories to **completed outside of business working hours**
- **Accuracy to be verified** by store or site manager

### SOLUTION

The fashion retailer partnered with RGIS to complete the **accurate stock on hand project**, and RGIS provided the following:

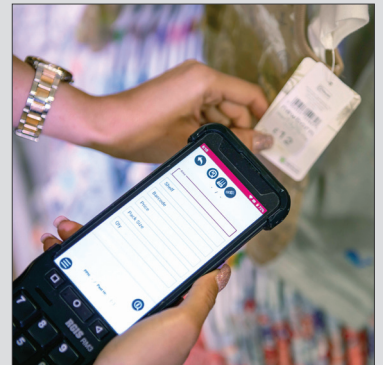
- The fashion retailer preferred the inventories to be completed after hours, so RGIS provided **teams of two to three experienced RGIS auditors** at each site
- The fashion retailer provided RGIS will a **full export of all their stock lines** which were used as the product master file
- On the day of the inventory, at the close of trade for each site, the fashion retailer **exported an expected stock on hand file** and provided it to RGIS
- Once RGIS had completed the initial count, a **variance report was then generated** indicating any differences between the expected stock on hand to that just counted
- These lines would be investigated by the RGIS Supervisor and the Store Manager to ensure accuracy. Once verified, the file was uploaded back into the site PC to **update the stock on hand levels**

### RESULTS

The fashion retailer found by outsourcing the **accurate stock on hand project** to RGIS the following results were achieved:

- All stores were **completed within the same week** so that the fashion retailer could obtain a business-wide accurate stock position
- All reporting was completed prior to RGIS leaving each site which enabled the fashion retailer's site to start trading the next morning with the **accurate inventory data**
- At each site RGIS counted approximately **3,000 units**
- Due to the accuracy of these inventories, RGIS have an **ongoing relationship with the fashion retailer to complete all of their store inventories every three to six months**

By partnering with RGIS, the fashion retailer found that all reporting was completed prior to RGIS leaving which **enabled the site to start trading the next morning with the accurate inventory data**



© 2021 RGIS. All rights reserved.  
RGIS\_CS\_0266\_01

Inventory



Accurate Data



Variance Reports



Fast Turnaround



CONTACT **RGIS** TODAY TO SEE HOW WE CAN HELP YOU

 [Sales@rgis.com](mailto:Sales@rgis.com)

 [www.rgis.com](http://www.rgis.com)

**RGIS**